

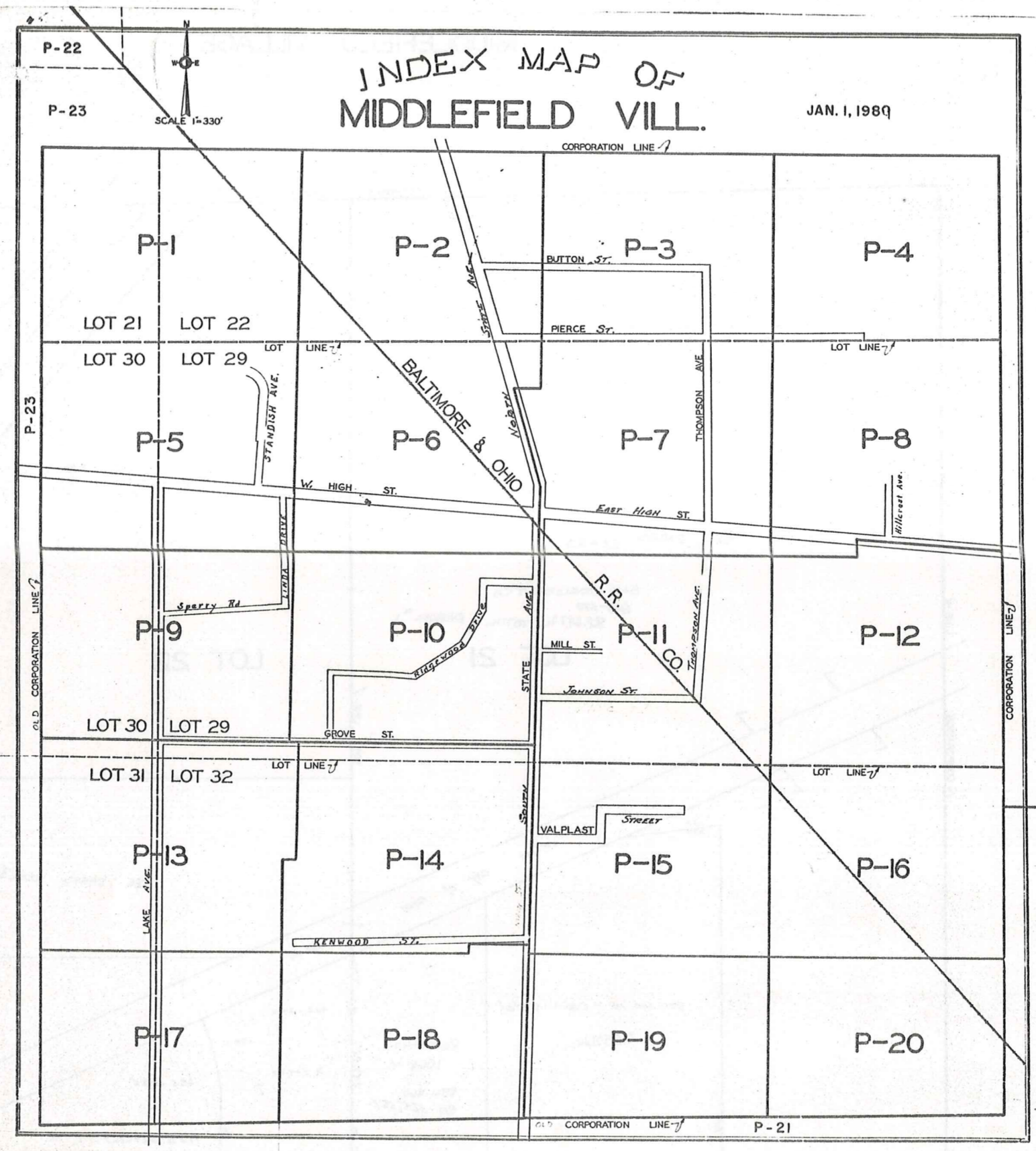
# INDEX MAP OF MIDDLEFIELD VILL.

JAN. 1, 1980

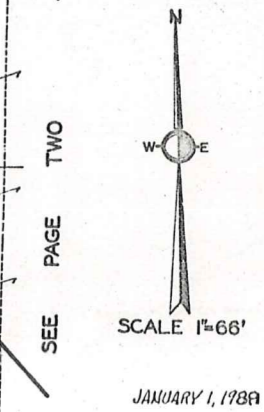
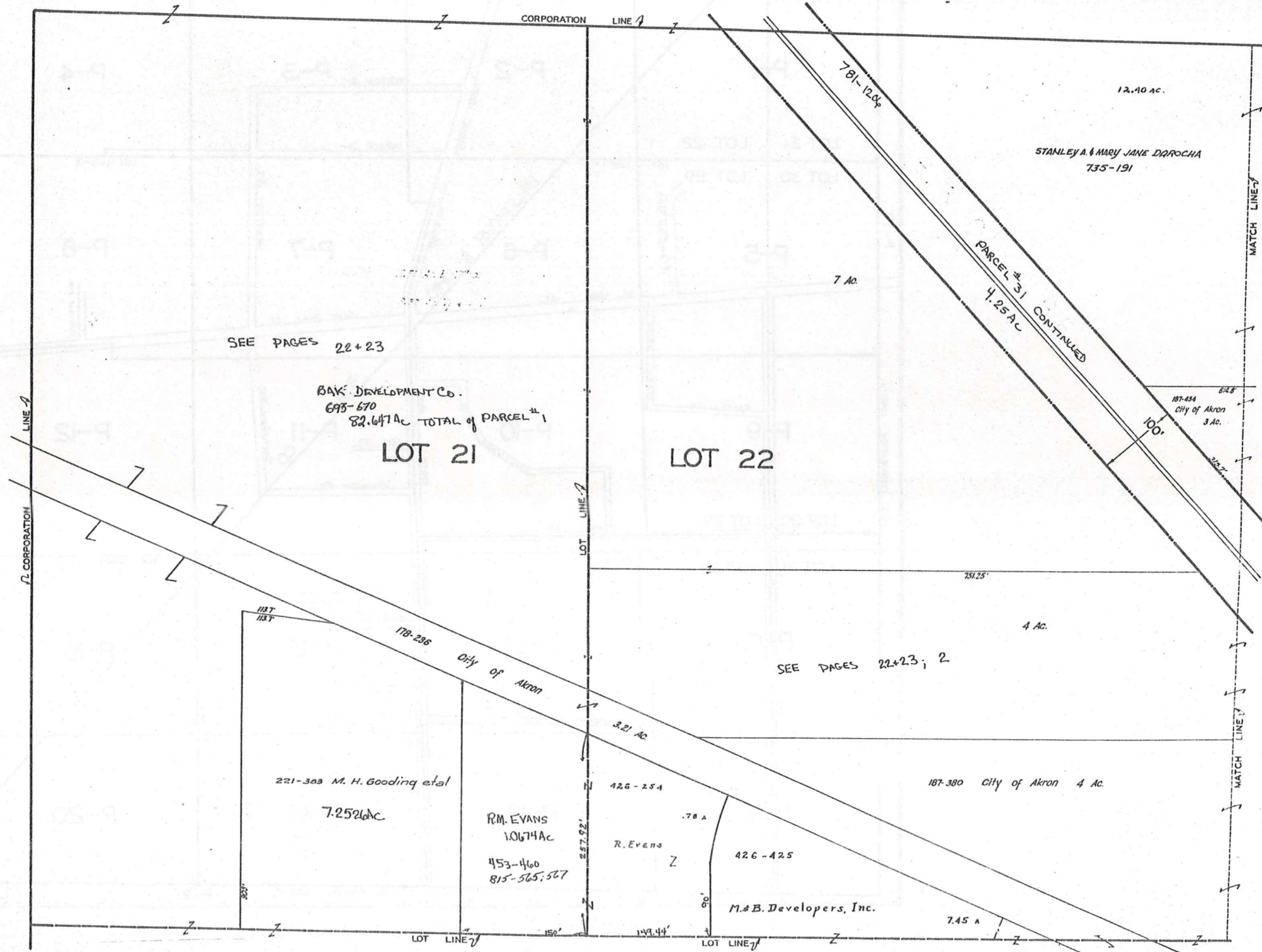
P-22

P-23

SCALE 1"=330'



MIDDLEFIELD VILLAGE



SEE PAGES 22+23

BAK DEVELOPMENT CO.  
695-670  
82.647 AC TOTAL of PARCEL #1

LOT 21

LOT 22

SEE PAGES 22+23; 2

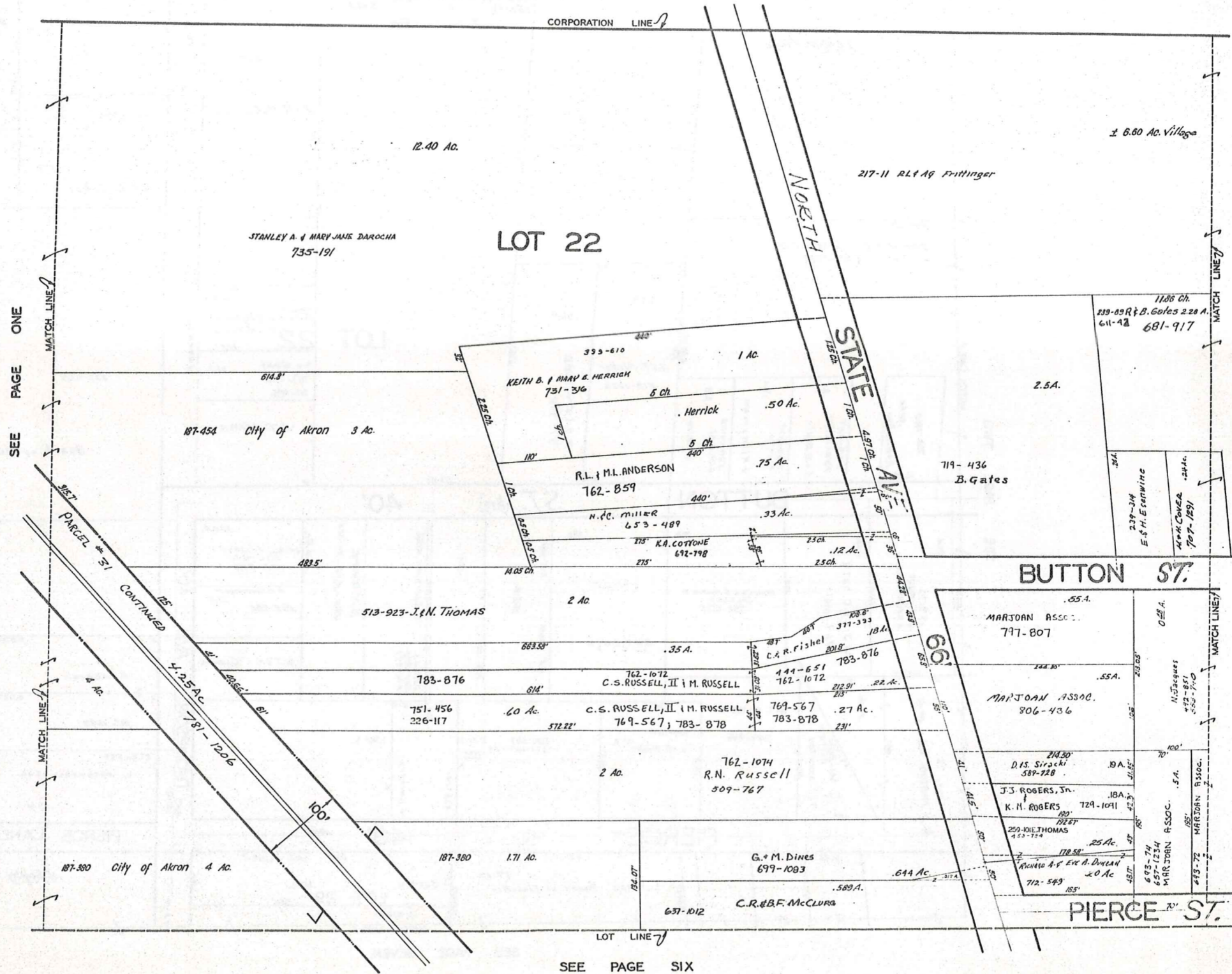
R.M. EVANS  
1.0674 AC

453-460  
815-565; 567

M.B. Developers, Inc.

SEE PAGE FIVE

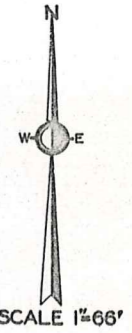
SEE PAGE TWO



SEE PAGE ONE

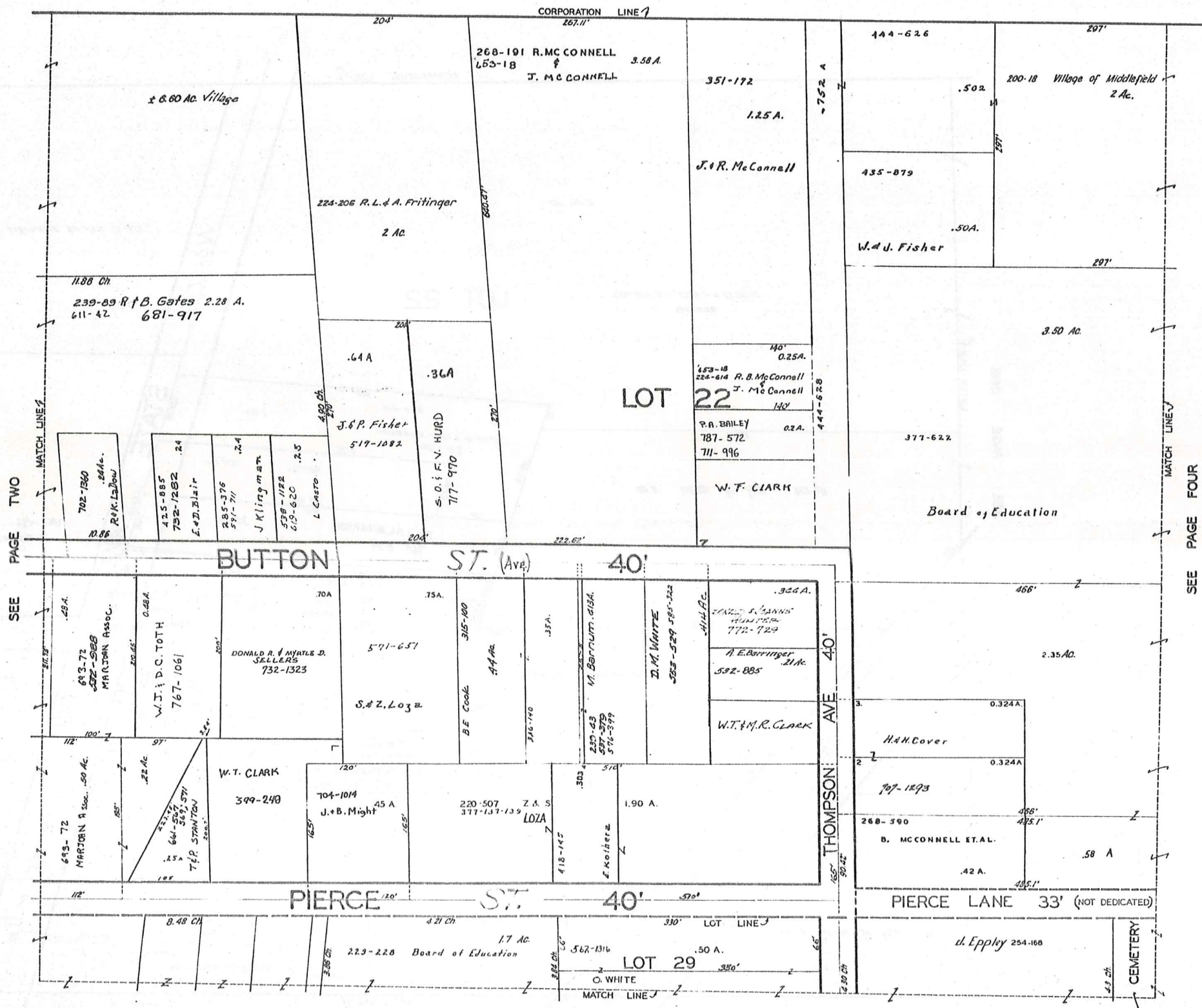
SEE PAGE THREE

SEE PAGE SIX



SCALE 1"=66'

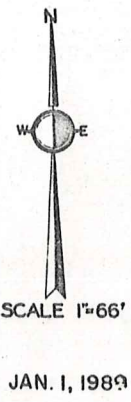
JAN. 1, 1989

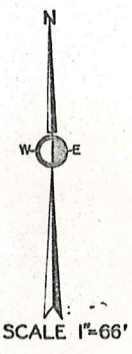
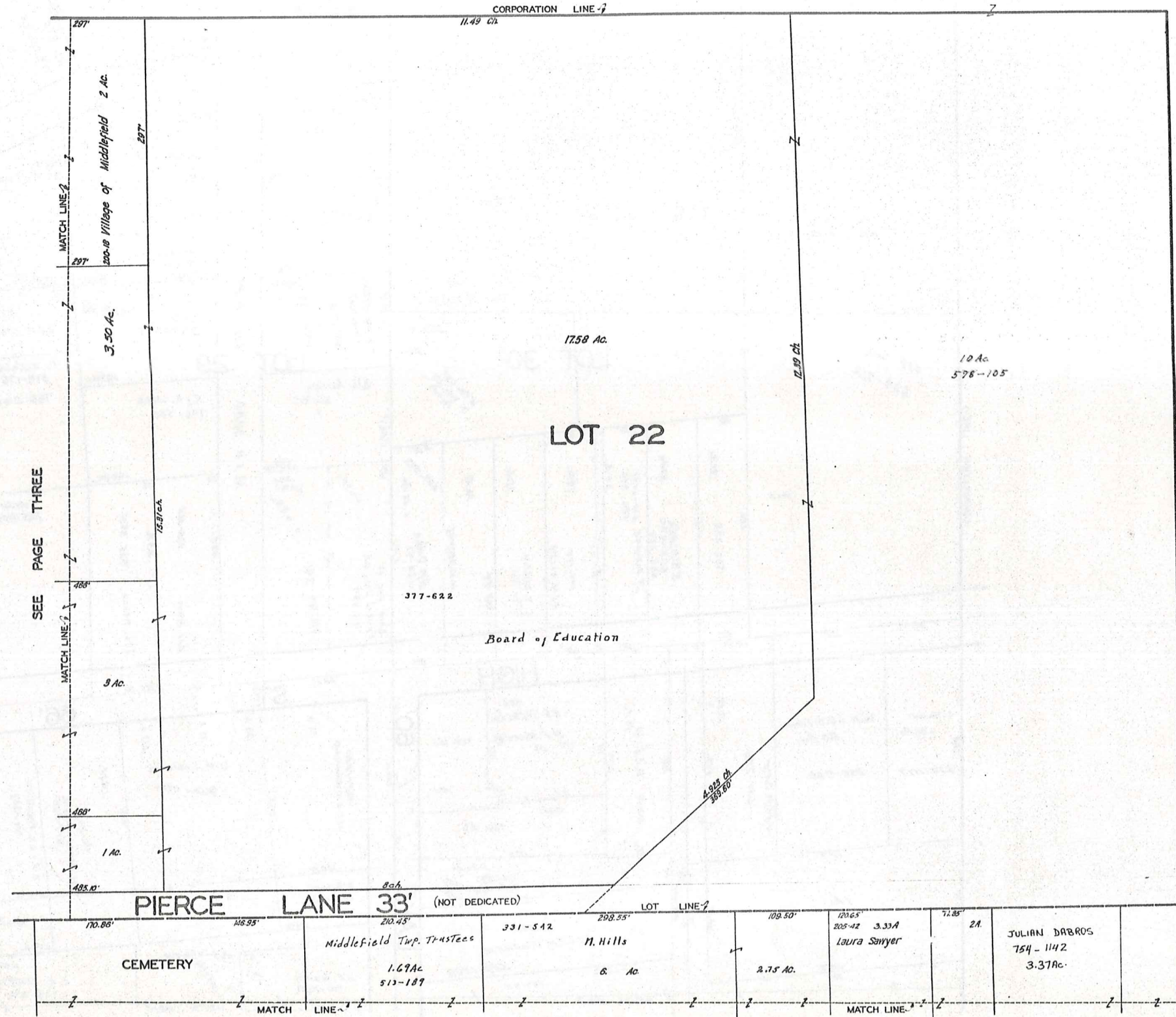


SEE PAGE TWO

SEE PAGE FOUR

SEE PAGE SEVEN

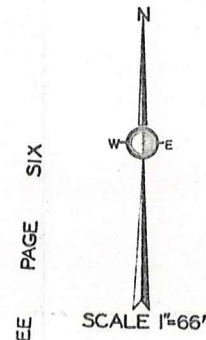
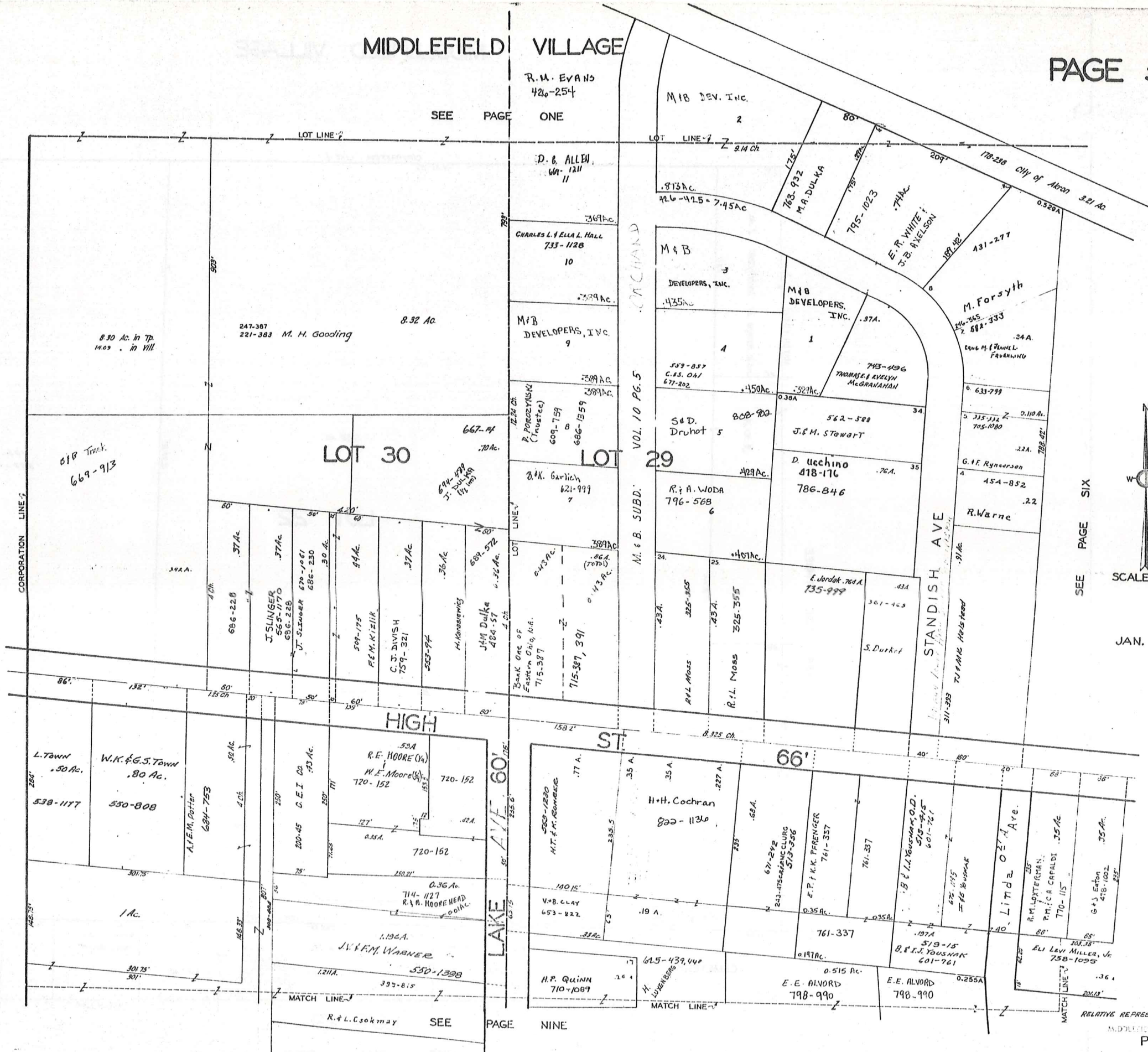




SEE PAGE THREE

MIDDLEFIELD VILLAGE

SEE PAGE ONE



SEE PAGE SIX

JAN. 1, 1989

RELATIVE REPRESENTATION  
MIDDLEFIELD VILLAGE  
PG. 5



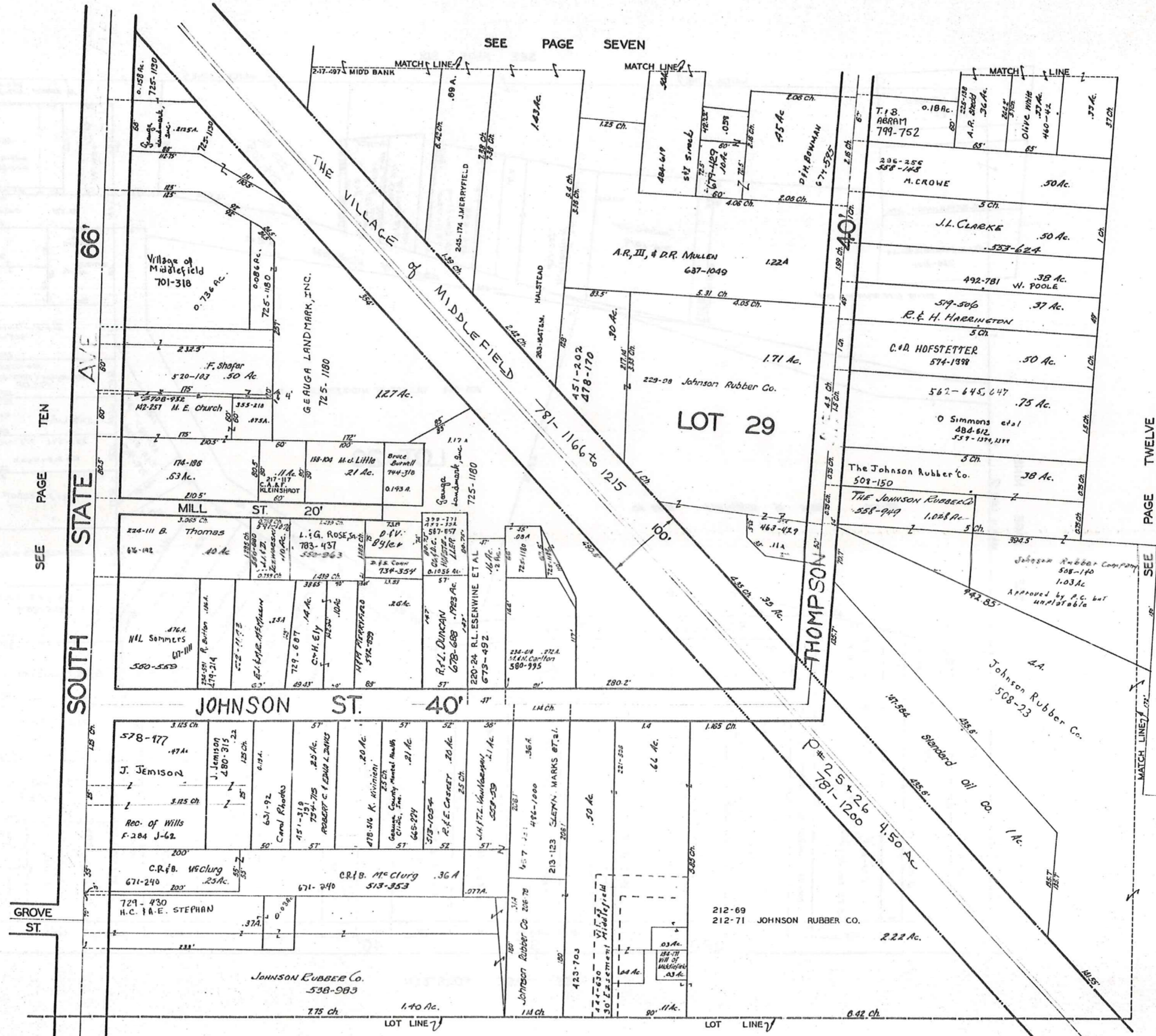








MIDDLEFIELD VILLAGE



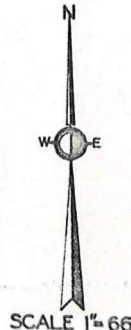
SEE PAGE TEN

SOUTH STATE AVE 66'

SEE PAGE SEVEN

SEE PAGE FIFTEEN

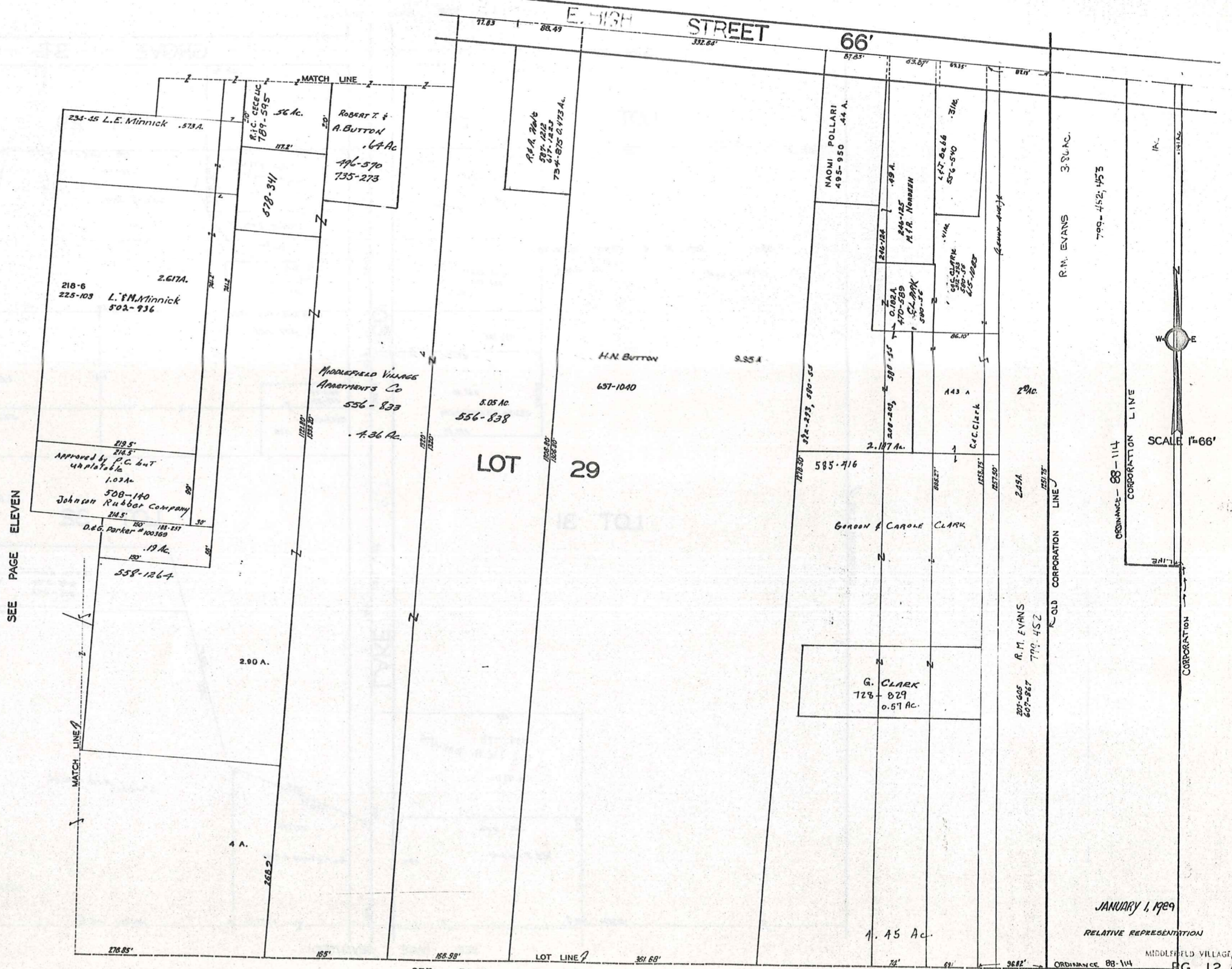
PAGE TWELVE



SCALE 1"=66'  
JAN. 1, 1989

RELATIVE REPRESENTATION

SEE PAGE EIGHT



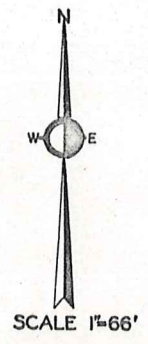
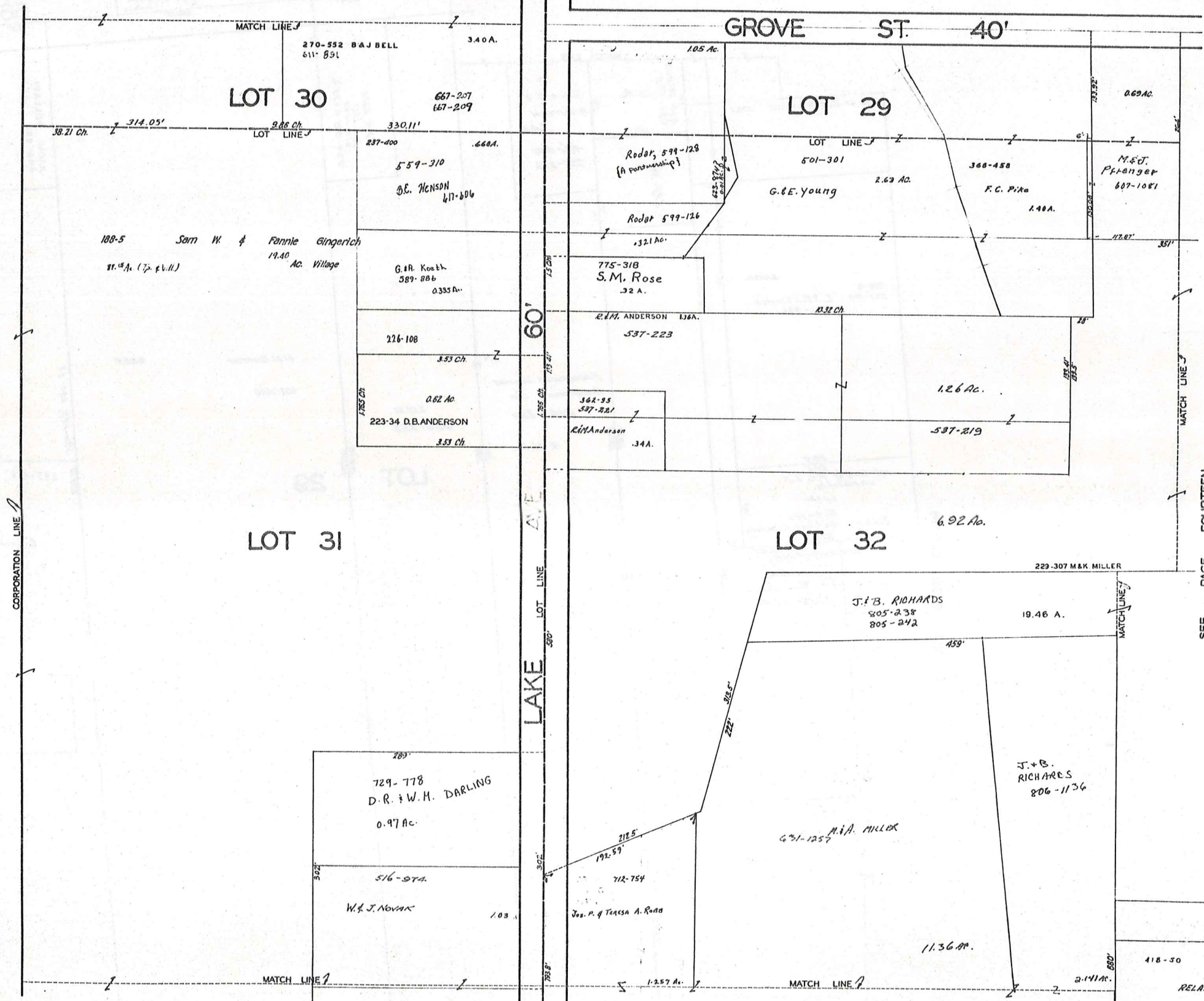
SEE PAGE ELEVEN

SEE PAGE SIXTEEN

JANUARY 1, 1929

RELATIVE REPRESENTATION

SEE PAGE NINE



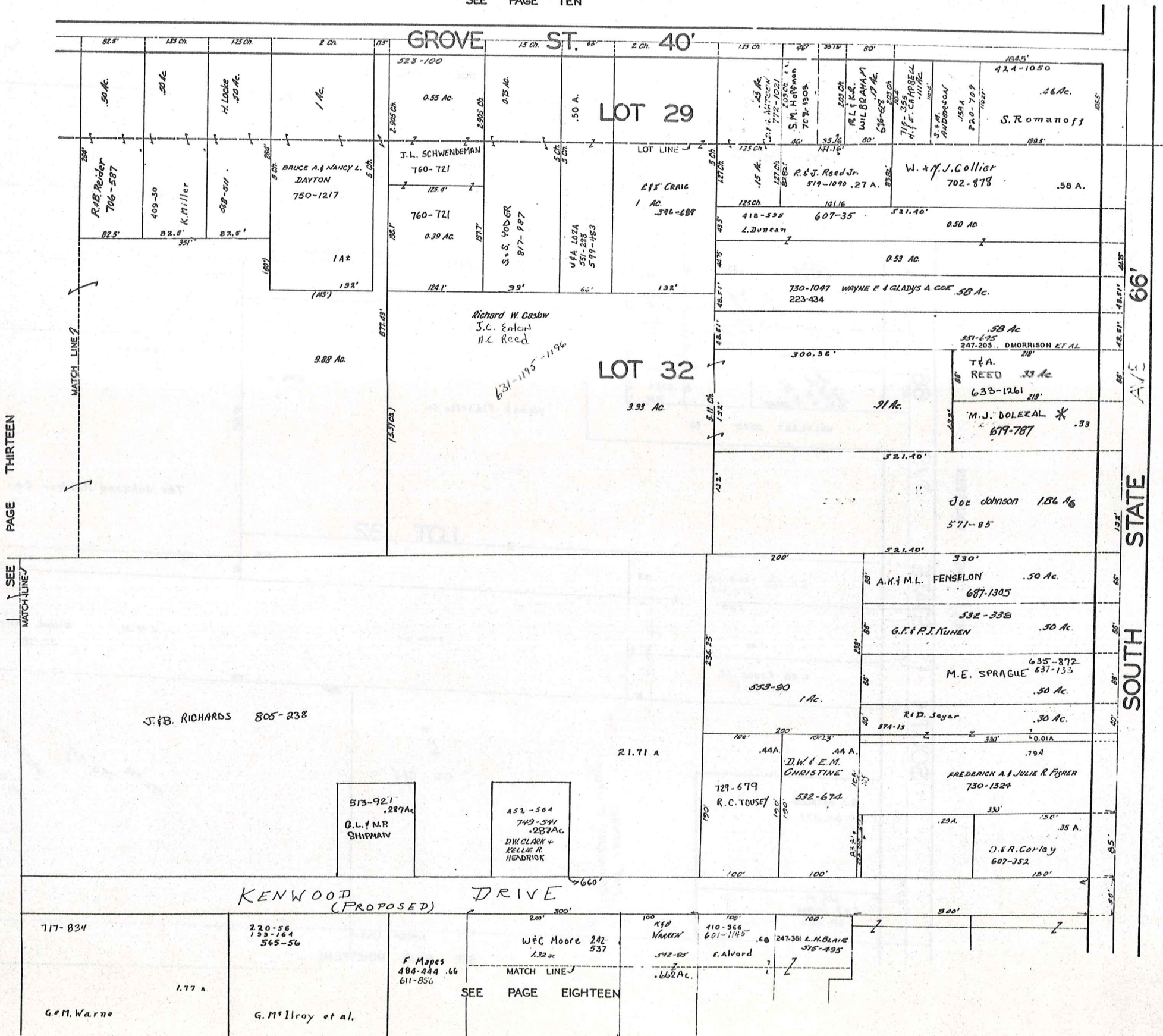
JAN. 1, 1989

SEE PAGE FOURTEEN

SEE PAGE SEVENTEEN

RELATIVE REPRESENTATION  
MIDDLEFIELD VILLAGE  
G. & M. WARNE  
PG. 13  
177 A

SEE PAGE TEN



PAGE THIRTEEN

SEE PAGE FIFTEEN



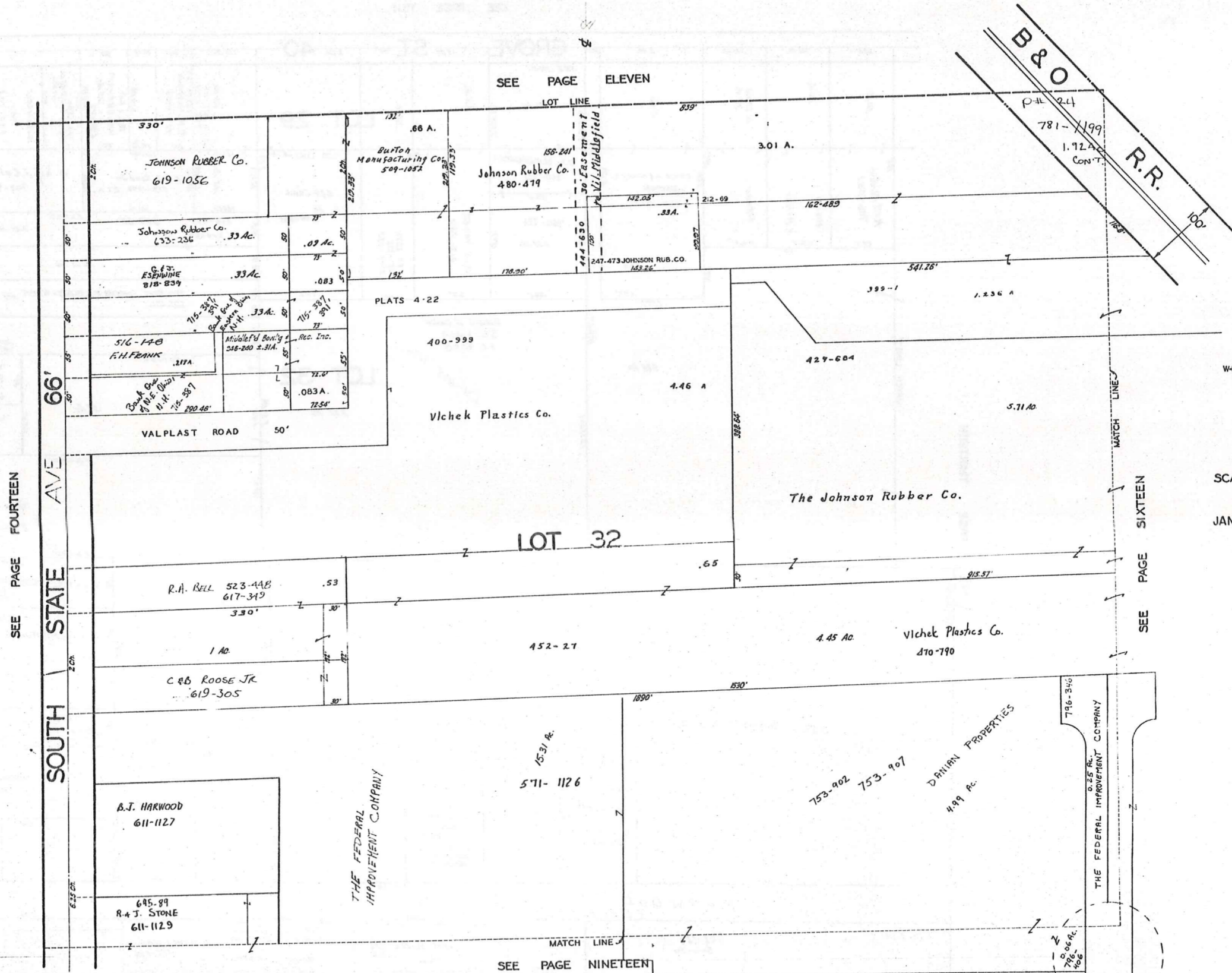
SCALE 1"=66'

JAN. 1, 1989

RELATIVE REPRESENTATION

MIDDLEFIELD VILLAGE

SEE PAGE ELEVEN



SCALE 1"=66'  
 JAN. 1, 1969

SEE PAGE FOURTEEN

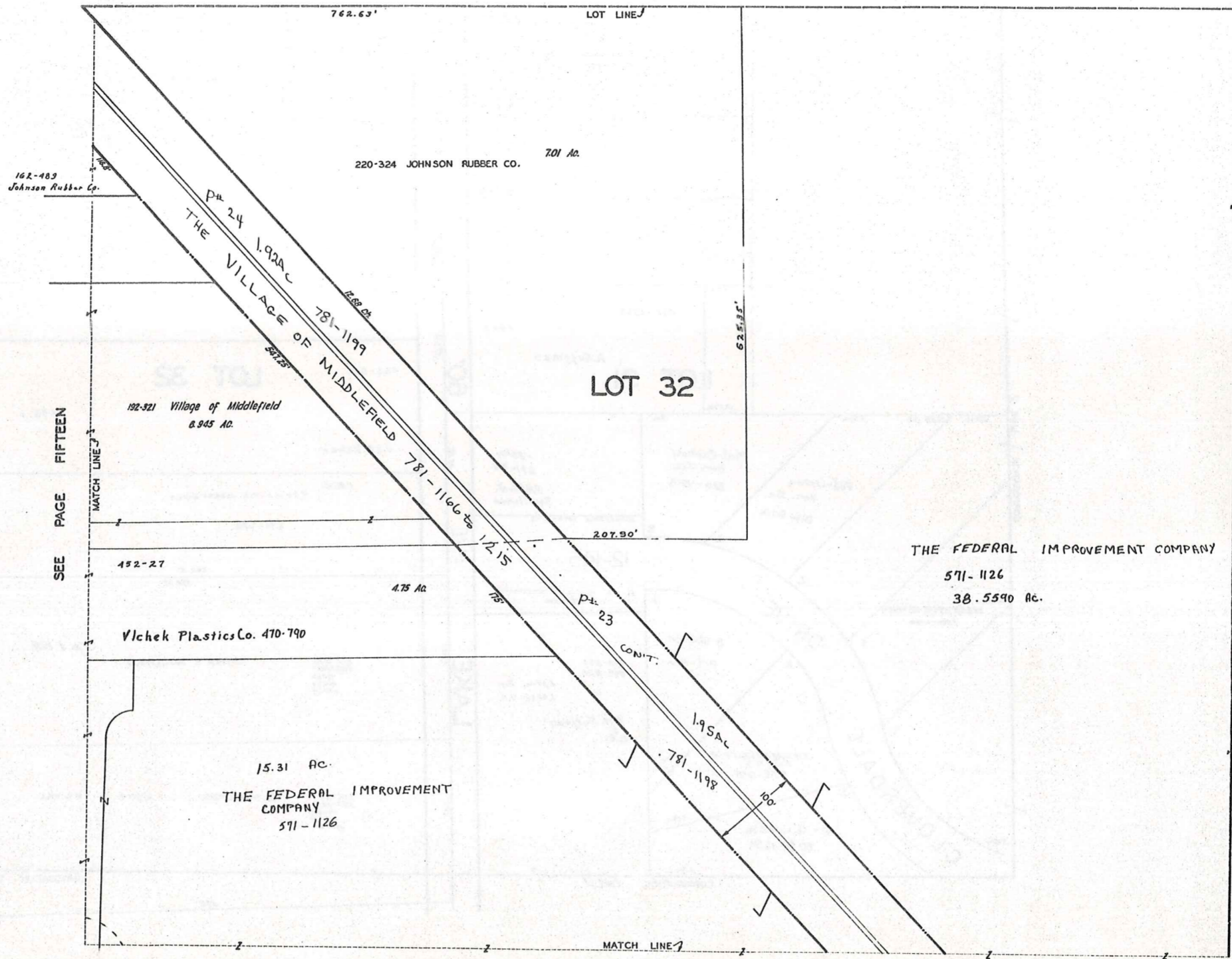
SOUTH STATE AVE 66'

SEE PAGE SIXTEEN

SEE PAGE NINETEEN

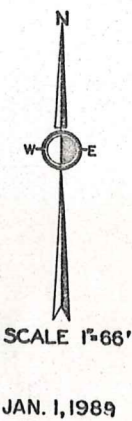
RELATIVE REPRESENTATION

SEE PAGE TWELVE



SEE PAGE FIFTEEN

SEE PAGE 21



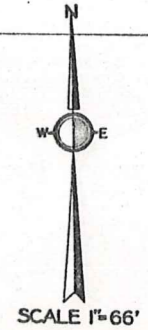
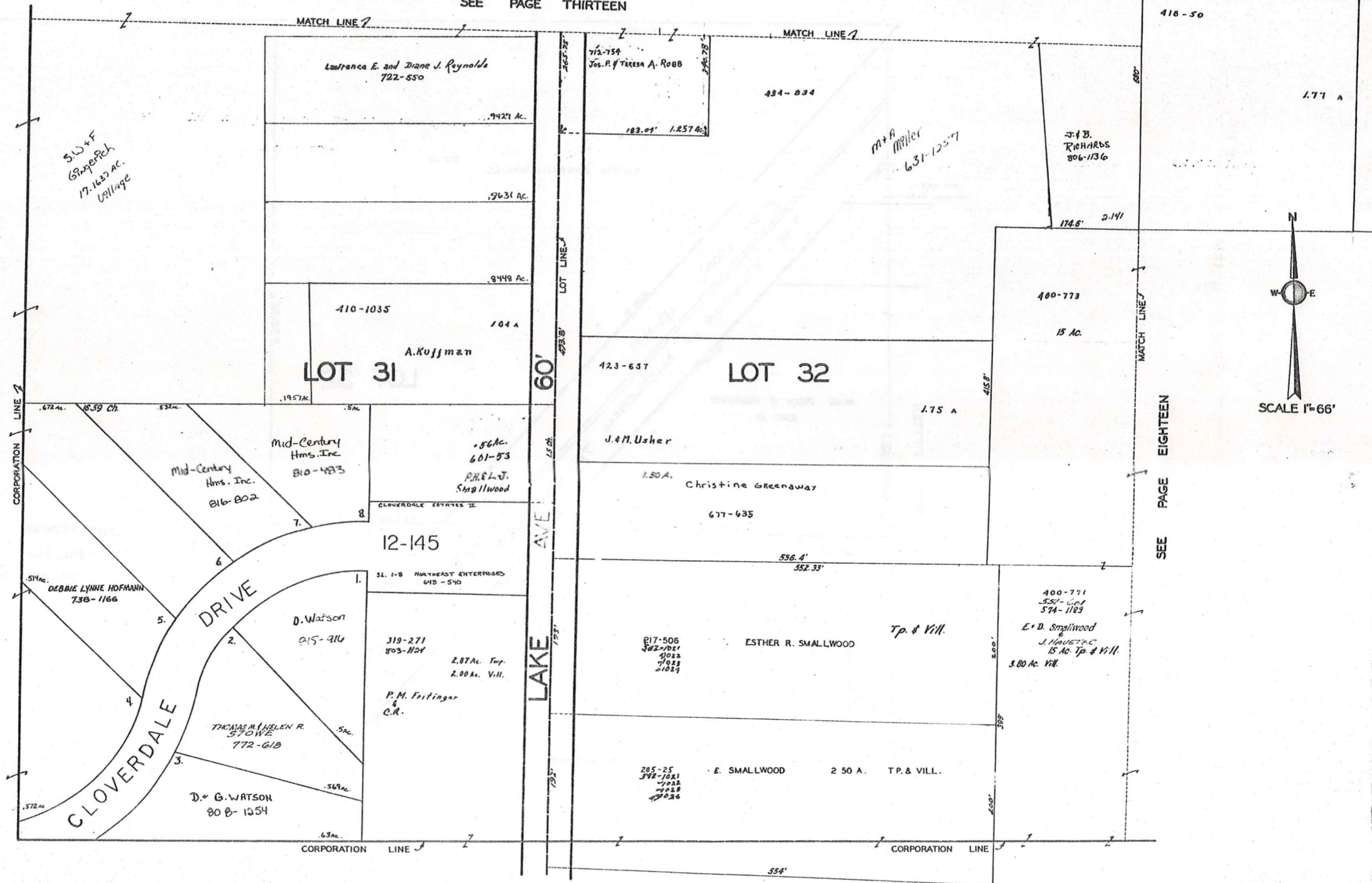
THE FEDERAL IMPROVEMENT COMPANY  
 571-1126  
 38.5590 AC.

SEE PAGE TWENTY

RELATIVE REPRESENTATION

MIDDLEFIELD VILLAGE

SEE PAGE THIRTEEN

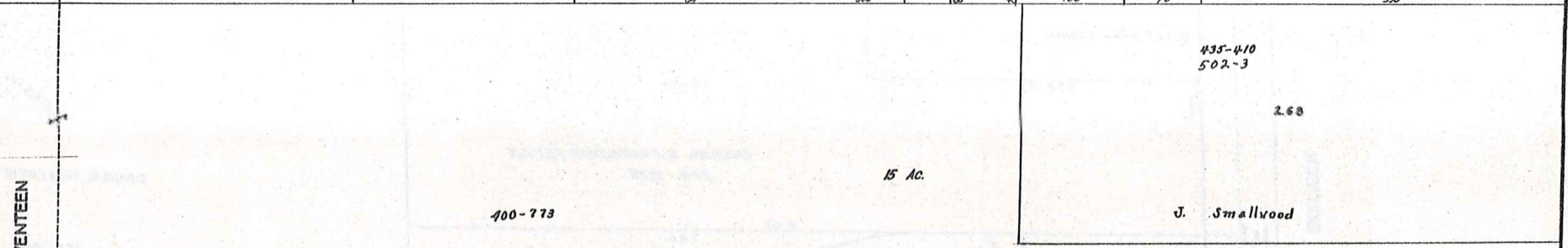
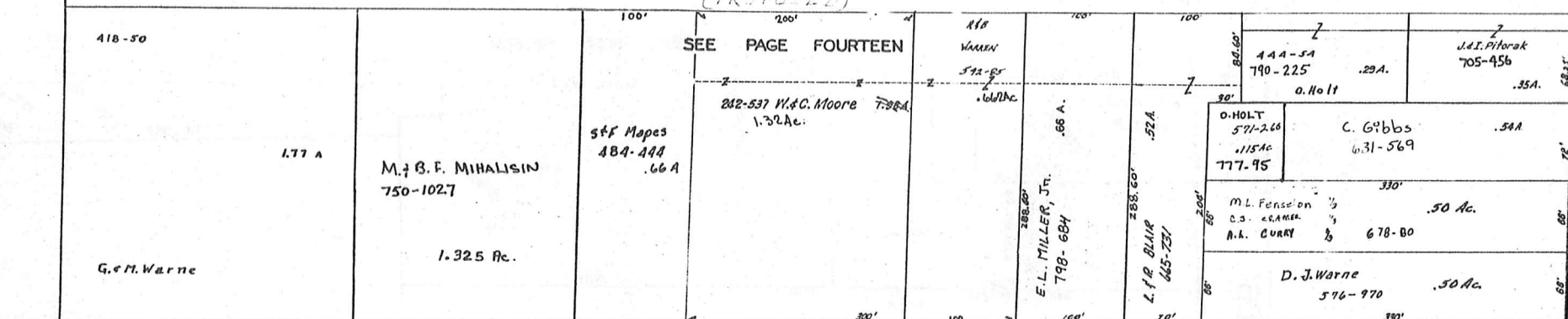


SEE PAGE EIGHTEEN

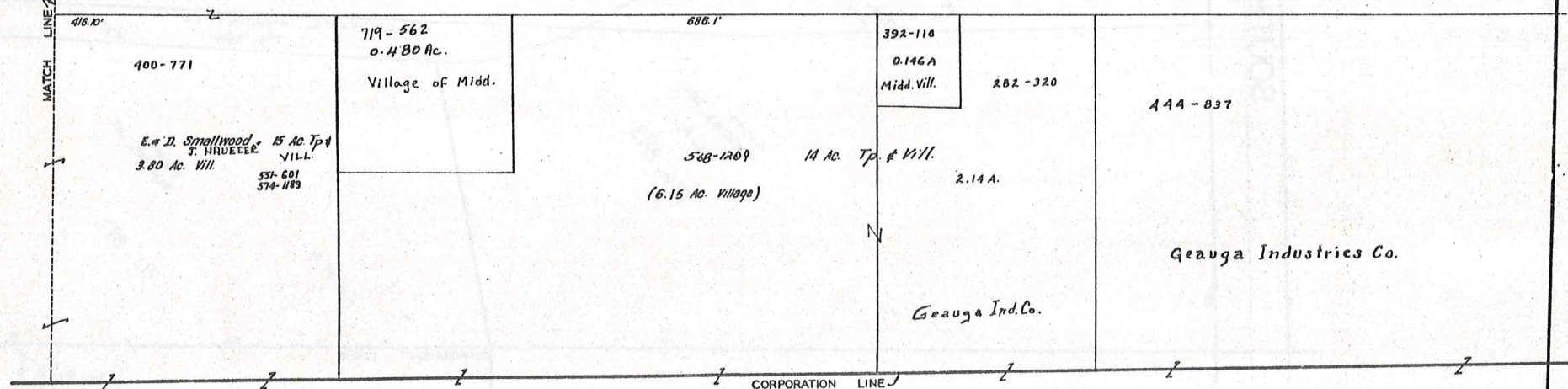
JANUARY 1, 1969  
RELATIVE REPRESENTATION

MIDDLEFIELD VILLAGE

KINWOOD (PROPOSED) DRIVE 50'

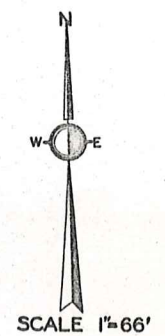


LOT 32

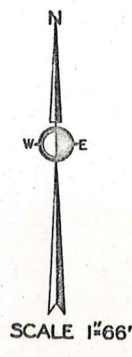
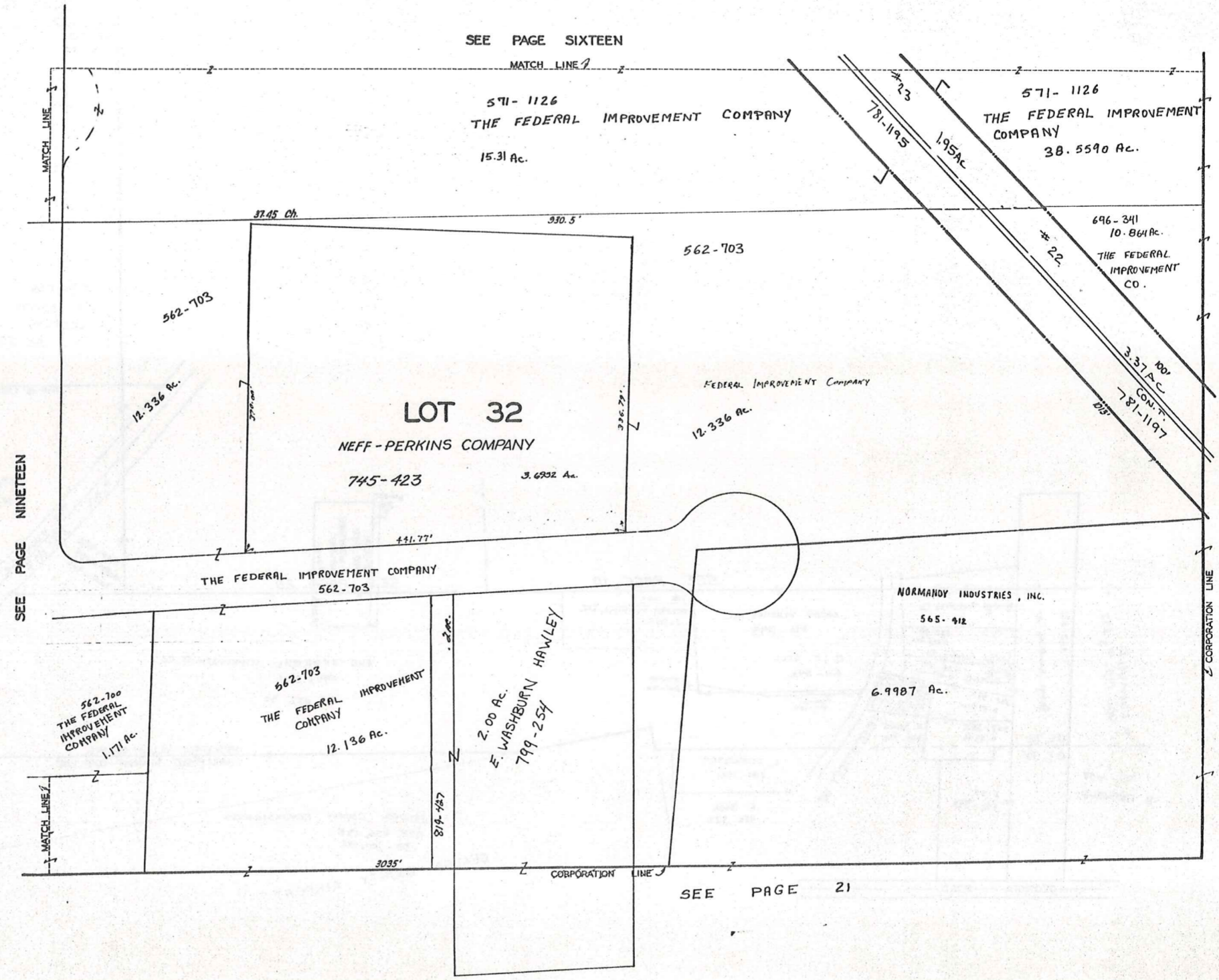


SEE PAGE SEVENTEEN

SEE PAGE NINETEEN



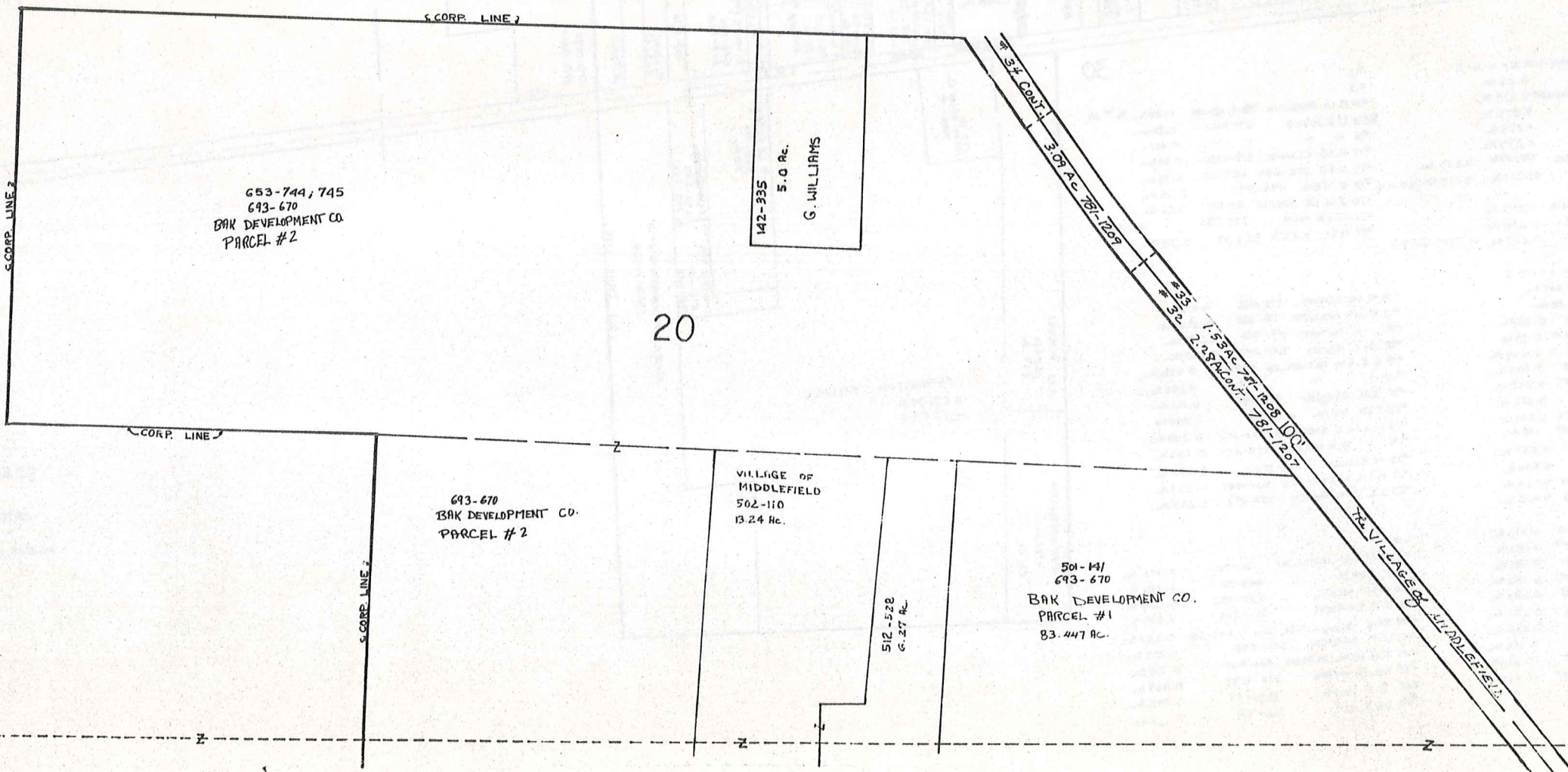




JAN 1, 1989



W. WALDEN



653-744, 745  
693-670  
BAK DEVELOPMENT CO.  
PARCEL #2

142-335  
5.0 Ac.  
G. WILLIAMS

20

693-670  
BAK DEVELOPMENT CO.  
PARCEL #2

VILLAGE OF  
MIDDLEFIELD  
502-110  
13.24 Ac.

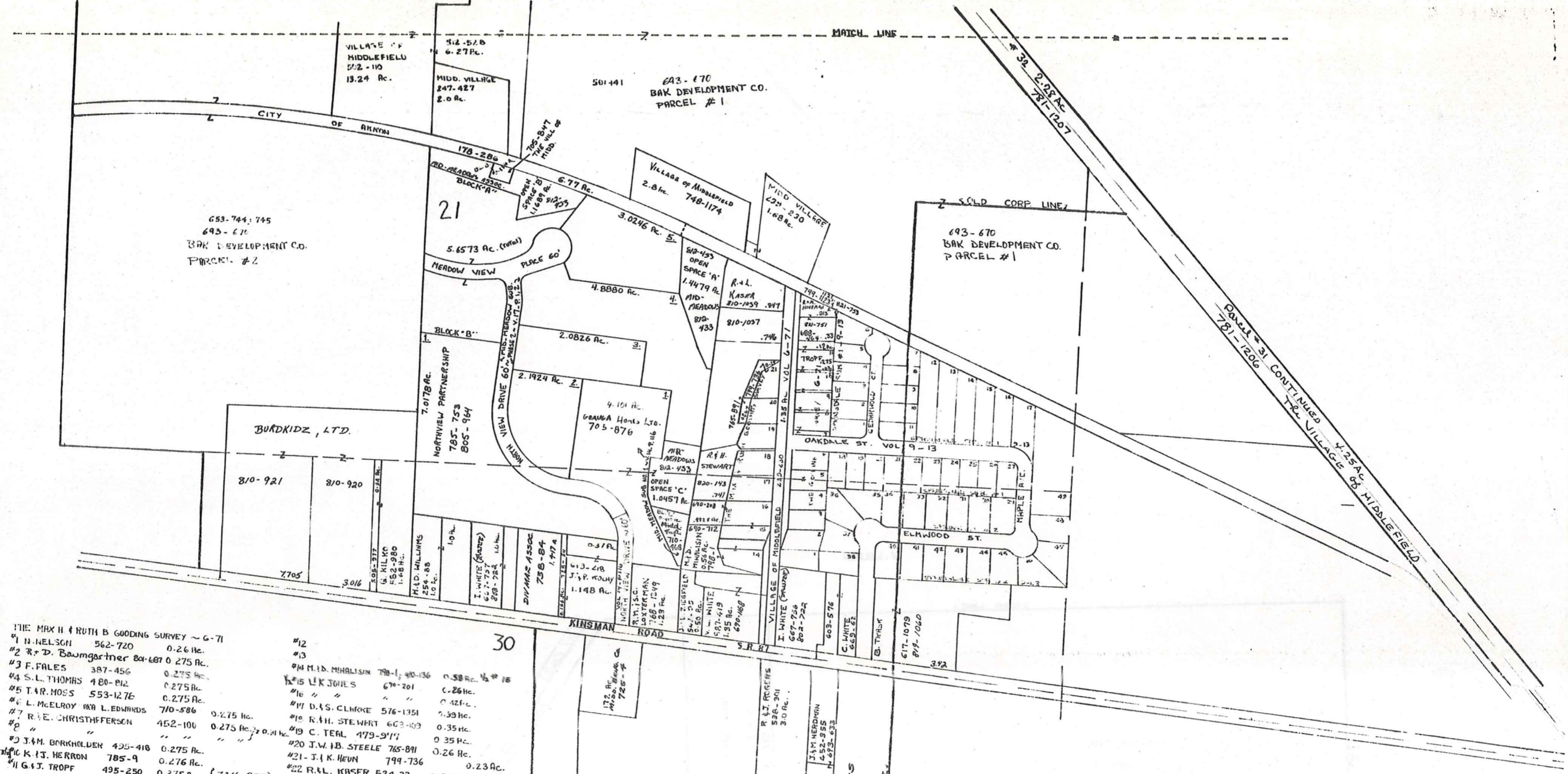
512-522  
6.27 Ac.

501-141  
693-670  
BAK DEVELOPMENT CO.  
PARCEL #1  
83.447 Ac.



SCALE 1"=200'  
JAN. 1, 1989  
RELATIVE REPRESENTATION

MIDDLEFIELD VLLAGE  
PG. 22



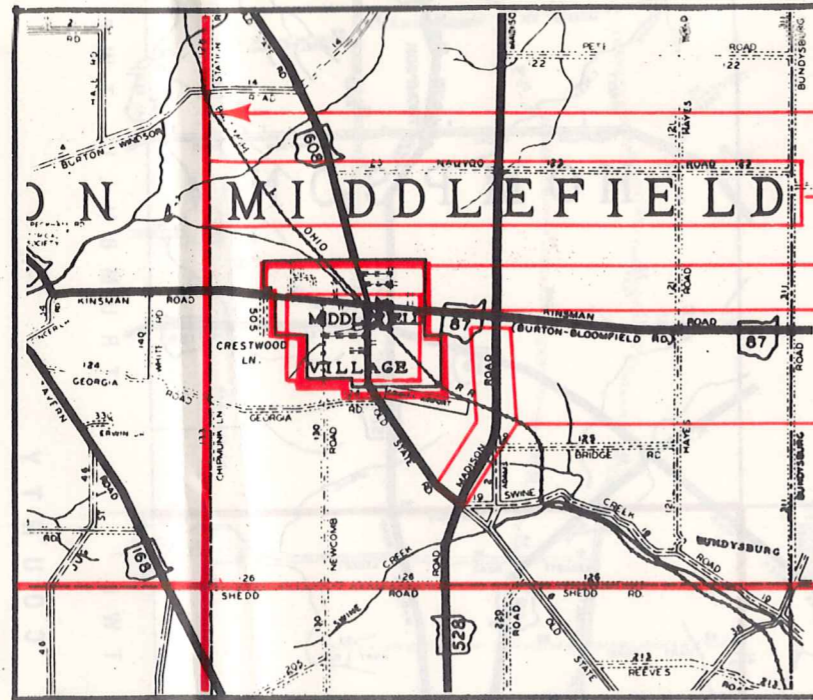
- THE MAX H & RUTH B GOODING SURVEY ~ G-71
- #1 H. NELSON 562-720 0.26 Ac.
  - #2 R. D. Baumgartner 804-687 0.275 Ac.
  - #3 F. FALES 387-456 0.275 Ac.
  - #4 S. L. THOMAS 480-812 0.275 Ac.
  - #5 T. R. MOSS 553-1276 0.275 Ac.
  - #6 L. McELROY AND L. EDWARDS 710-586 0.275 Ac.
  - #7 R. E. CHRISTENSEN 452-100 0.275 Ac.
  - #8 " " " " " " " " " " " "
  - #9 J. M. BORKHOLDER 425-418 0.275 Ac.
  - #10 K. J. HERRON 785-9 0.276 Ac.
  - #11 G. J. TROFF 495-250 0.275 Ac. (734-289)
- SPRINGDALE SUBDIVISION NO. 1 & NO. 2
- #1 D. M. Barton 705-121 0.247 Ac.
  - #2 K. QUILLEN 550-892 0.25 Ac.
  - #3 P. L. WISEMAN 795-31, 537-644 0.25 Ac.
  - #4 S. M. KOZENKO 809-205 0.25 Ac.
  - #5 G. W. & B. J. WILKES 537-633 0.235 Ac.
  - #6 C. W. LANGHAM 562-906 0.293 Ac.
  - #7 A. J. SATTRECK 805-442 0.247 Ac.
  - #8 G. FULOP 780-739 0.282 Ac.
  - #9 H. D. BARCOWSKI 537-924 0.250 Ac.
  - #10 G. C. & J. R. TROFF 734-289 0.3 Ac.
  - #11 R. E. STEWART 533-722 0.247 Ac.
  - #12 E. E. SELBY 484-600 0.580 Ac.
  - #13 M. E. BRILLA 485-54 0.524 Ac.
  - #14 W. B. OSMOND 576-1033 0.468 Ac.
- HARRINGTON SQUARE
- #15 W. B. OSMOND 576-1032 0.412 Ac.
  - #16 M. M. MALLISKI 791-650 0.356 Ac.
  - #17 R. DeMAREN 819-126 0.373 Ac.
  - #18 D. C. HERSH 810-243 0.237 Ac.
  - #19 R. J. & M. DETWEILER 582-226 0.250 Ac.
  - #20 " " " " " " " " " " " "
  - #21 E. C. Ziegler 702-551 0.250 Ac.
  - #22 J. D. SMITH 611-728 0.250 Ac.
  - #23 L. G. & L. EIERMANN 531-303 0.250 Ac.
  - #24 B. R. HATCH 719-222 0.250 Ac.
  - #25 M. BARLOW 537-1047 0.250 Ac.
  - #26 M. M. PFENEGEE 537-1097 0.237 Ac.
  - #27 J. L. & V. MILLER 537-672 0.249 Ac.
- Other owners and acreages listed include:
- #12 M. D. MHALISIN 790-1, 410-336 0.38 Ac. 1/2 # 15
  - #15 L. K. JOHNS 670-201 0.26 Ac.
  - #16 " " " " " " " " " " " "
  - #17 D. S. CLARKE 576-1351 0.421 Ac.
  - #18 R. H. STEWART 603-103 0.39 Ac.
  - #19 C. TEAL 479-917 0.35 Ac.
  - #20 J. W. B. STEELE 765-891 0.35 Ac.
  - #21 J. J. K. HEIN 799-736 0.26 Ac.
  - #22 R. L. KASER 524-33 0.37 Ac.
  - #23 W. B. OSMOND 576-1032 0.412 Ac.
  - #24 M. M. MALLISKI 791-650 0.356 Ac.
  - #25 R. DeMAREN 819-126 0.373 Ac.
  - #26 D. C. HERSH 810-243 0.237 Ac.
  - #27 R. J. & M. DETWEILER 582-226 0.250 Ac.
  - #28 " " " " " " " " " " " "
  - #29 E. C. Ziegler 702-551 0.250 Ac.
  - #30 J. D. SMITH 611-728 0.250 Ac.
  - #31 L. G. & L. EIERMANN 531-303 0.250 Ac.
  - #32 B. R. HATCH 719-222 0.250 Ac.
  - #33 M. BARLOW 537-1047 0.250 Ac.
  - #34 M. M. PFENEGEE 537-1097 0.237 Ac.
  - #35 J. L. & V. MILLER 537-672 0.249 Ac.
  - #36 W. R. & M. DANTECORSKY 555-913 0.333 Ac.
  - #37 J. BRUCE 663-711 0.281 Ac.
  - #38 R. P. FISHER 500-490 0.280 Ac.
  - #39 J. BRIGHAM 551-574 0.279 Ac.
  - #40 " " " " " " " " " " " "
  - #41 " " " " " " " " " " " "
  - #42 " " " " " " " " " " " "
  - #43 " " " " " " " " " " " "
  - #44 " " " " " " " " " " " "
  - #45 " " " " " " " " " " " "
  - #46 " " " " " " " " " " " "
  - #47 " " " " " " " " " " " "
  - #48 " " " " " " " " " " " "
  - #49 " " " " " " " " " " " "



SCALE 1" = 200'  
 JAN. 1, 1969  
 RELATIVE REPRESENTATION

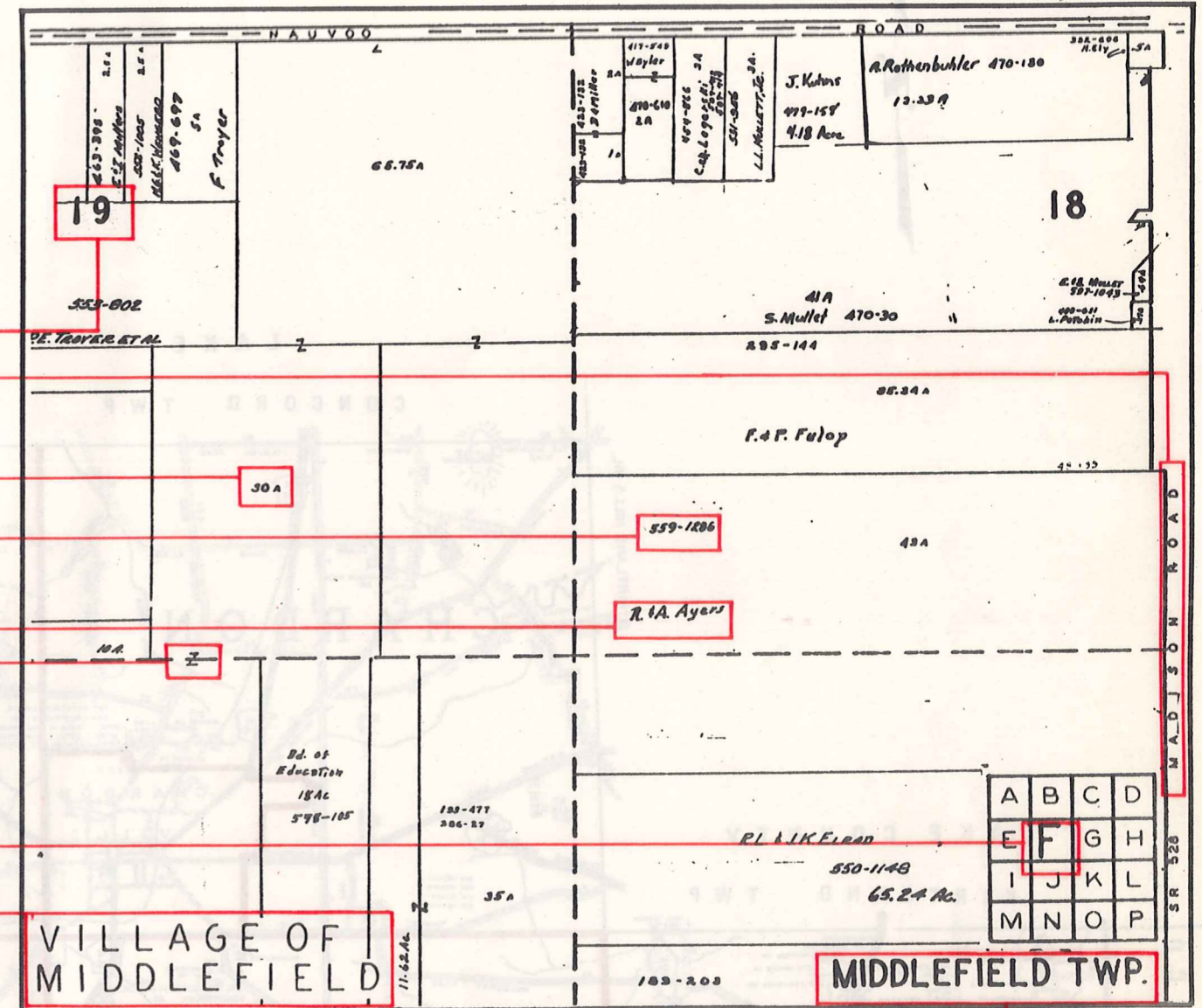
# Explanation and Use Sheet for Geauga County, Ohio

SAMPLE (PARTIAL) COUNTY INDEX MAP



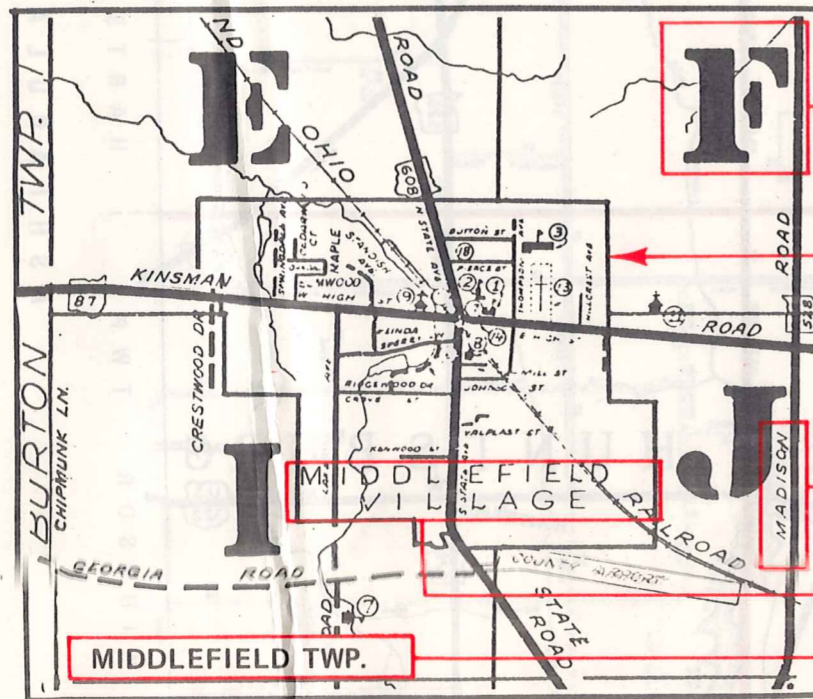
- Township Boundary
- Township Name
- Village Boundary
- Village Name
- Tract Lot Number
- Street Name
- Acreage
- Deed Book & Page
- Owners Name
- Denotes Continous Ownership

SAMPLE (PARTIAL) MAP PAGE



- Map Page Number
- Village Name
- Village Boundary
- Township Name

SAMPLE (PARTIAL) MUNICIPALITY INDEX MAP



- Street Name
- Village Name
- Township Name

## USE OF THE MAP VOLUME

1. LOCATE THE GENERAL AREA OF INTEREST ON THE COUNTY INDEX MAP, ATLAS PAGE 'B', AND NOTE THE MUNICIPALITY NAME (TOWNSHIP OR VILLAGE).
2. REFER TO THE TABLE OF CONTENTS, ATLAS PAGE 'C', AND NOTE THE BEGINNING ATLAS PAGE NUMBER FOR THE MUNICIPALITY OF INTEREST.
3. TURN TO THE PAGE INDICATED. ON THIS PAGE WILL APPEAR AN INDEX MAP FOR THAT MUNICIPALITY.
4. LOCATE THE GENERAL AREA OF INTEREST AND NOTE THE MAP PAGE NUMBER. THIS MAY BE EITHER A LETTER OR A NUMBER.
5. MAP PAGES ARE IN ALPHABETICAL (OR NUMERICAL) SEQUENCE FOLLOWING THE MUNICIPALITY INDEX MAP. FOLLOW SEQUENCE TO THE MAP PAGE INDICATED.
6. LOCATE SPECIFIC PARCEL OF INTEREST AND NOTE THE DESIRED INFORMATION.

NOTE: ON SOME MAPS YOU MAY BE REFERRED TO A DETAIL SHEET SHOWING AN ENLARGEMENT OF THE AREA. THESE MAPS ARE FOUND AT THE END OF THE REGULAR MAP PAGES IN EACH MUNICIPALITY IN EITHER ALPHABETICAL OR NUMERICAL SEQUENCE.

NOTE: CHARDON VILLAGE HAS TITLE SHEETS. TO LOCATE OWNERS NAME, NOTE THE PARCEL NUMBER, REFER TO THE TITLE PAGE FOLLOWING THE MAP OF INTEREST, FOLLOW NUMERICAL SEQUENCE TO THE PARCEL NUMBER OF INTEREST AND NOTE THE DESIRED INFORMATION. IN ALL OTHER MUNICIPALITIES THE OWNERS NAME APPEARS ON THE MAP PAGE.

This book is the property of REAL ESTATE DATA, INC. and is distributed by REDI under a leasing arrangement requiring return to REDI upon termination of the lease. REDI reserves the right to reclaim this book if found in the possession of any firm or person where possession was obtained through any unauthorized source.